

## Doors & Jambs

Rigid steel construction and durable finish

Heavy-duty hinge system

Pre-engineered for optimal compatibility with Servacor frames

Variety of inset materials available

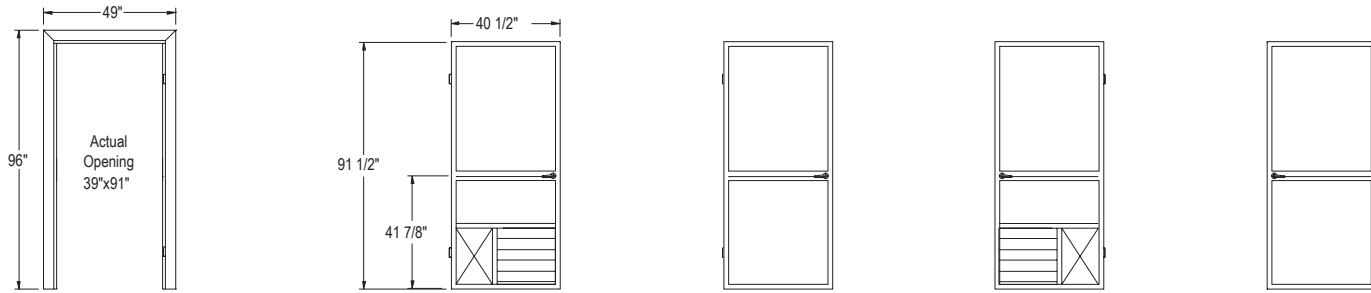
Available in heights to meet standard room dimensions

**STRUCTURAL INTEGRITY** All doors and jambs are welded using cold-rolled heavy-gauge tubular steel. Each is then polyurethane powder-coated and baked, resulting in a durable chip-resistant finish that withstands frequent cleansing and is contamination-free.

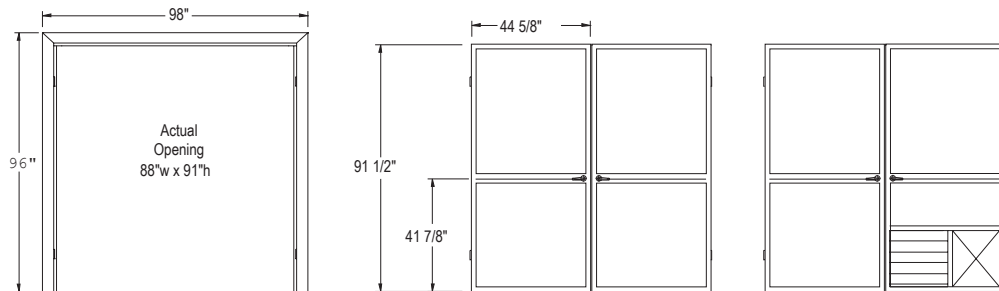
**UNIQUE AND INTELLIGENT DESIGN** The swing doors fit easily into the jambs which in turn bolt to other Servacor frames using barrel-nuts that act to tighten the seal with each turn. Servacor door jambs are factory gasketed and designed to correspond to modular room dimensions, through the doors remain a manageable size. The sliding door mounts to adjacent frames on the outside of the room.



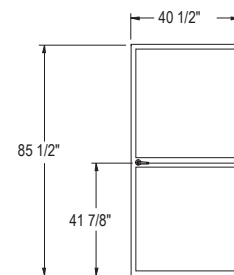
### 8' High Single Swing Doors and Corresponding Jamb



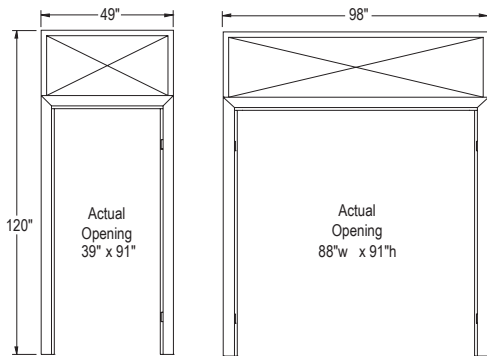
### 8' High Double Swing Doors and Corresponding Jamb



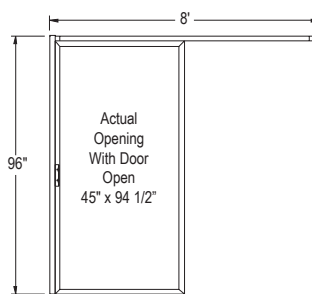
### 7.5' High Single Swing Door\*



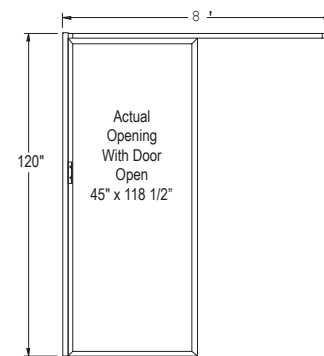
### 10' High Jamb (Use Standard 8' Doors)



### 8' High Sliding Door



### 10' High Sliding Door



\*Note regarding 7.5 High Doors and Jamb: Floor to handle dimensions remain the same as those in 8' High examples. All other vertical dimensions are reduced by 6', including "actual opening" dimensions.

## SPECIFICATIONS

### Dimensions

Standard height is 8'

### Steel

Doors: 1.75" x 1.75" x .095"

Jamb: 2"x4" heavy-gauge (0.095") cold-rolled steel tube

### Weld

MIG welded using 75/25 CO<sub>2</sub>+Argon gas for clean, precise and strong welds

### Finish

White polyurethane powder-coat, baked at 450 degrees

## OPTIONS

Handle options include standard pull handles, latch handles and keyed lock; Panic bar available for single swing door; latch available on one of a double swing set.

Standard inset materials include 1/4" clear acrylic, 1/4" aluminum honeycomb, 1/4" high-density PVC, Clear 16 mil flexible PVC, White 12 mil flexible PVC.\*

\*Note: Sliding door is limited to rigid insets

Application specific material available upon request include UV Yellow, Opaque black/green, static-dissipative and polycarbonate.